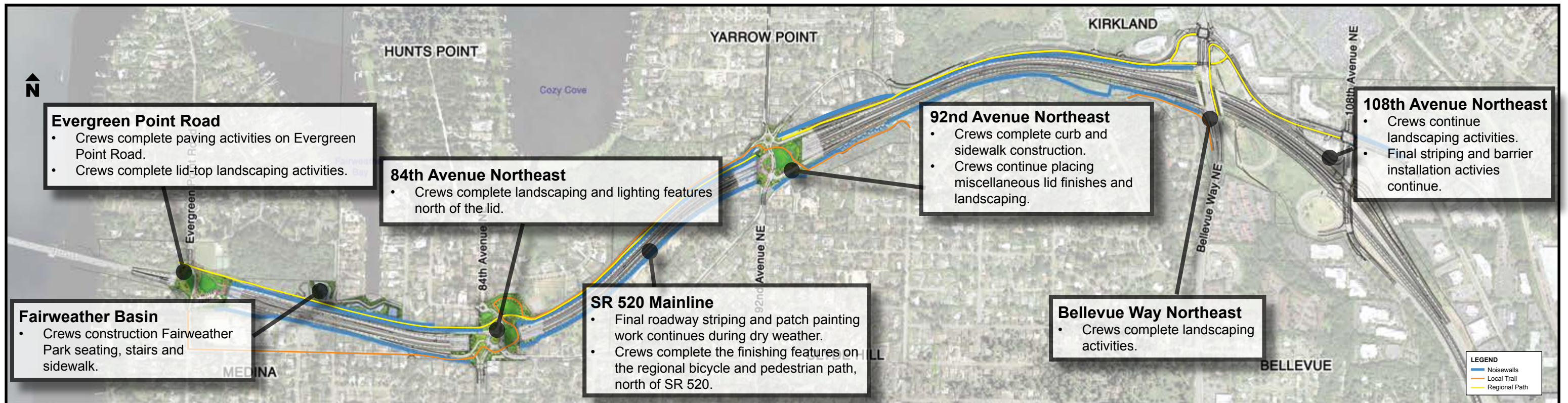


Eastside SR 520 construction activities - December 2014



November construction highlights



Crews completed waterproofing activities on the 92nd Avenue Northeast lid.



Crews completed drainage installation work in Medina. The new drainage system throughout the new corridor improves stormwater treatment.



Crews continued to install landscaping on the 84th Avenue Northeast lid.



Crews opened the bicycle and pedestrian path between 84th Avenue Northeast and Evergreen Point Road on the south side of the SR 520.



Crews continued wall painting activities throughout the corridor. This work requires dry weather and may continue through the winter.

Visit the SR 520 Orange Page for the most up-to-date project information: www.wsdot.wa.gov/projects/sr520bridge/520orangepage